

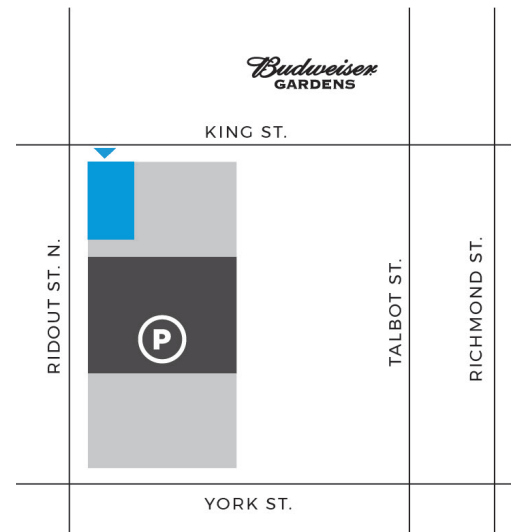
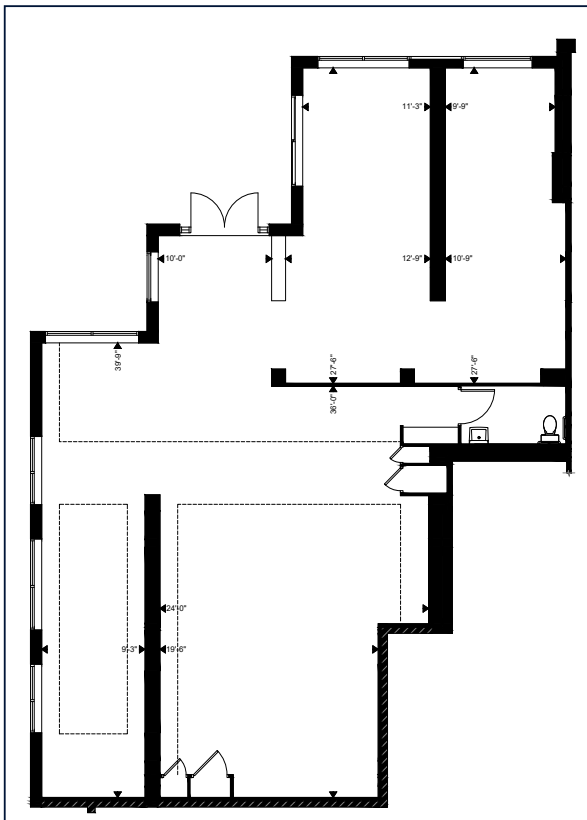
PRIME URBAN DOWNTOWN LONDON RETAIL/COMMERCIAL/OFFICE

65 KING ST. 2,280 SQ.FT.

- ▶ Prime core downtown location across from Budweiser Gardens
- ▶ King St. & Ridout St. frontage
- ▶ Base of high-end Renaissance development
- ▶ Competitive lease rates
- ▶ Adjacent to existing retail
- ▶ Base building condition, ready for Tenant build-out
- ▶ Turnkey build-out solutions available



\$32.00 gross / sq. ft. per annum



TRICAR

519-652-8900 x 110

retail@tricar.com
tricar.com/commercial