

PRIME URBAN DOWNTOWN LONDON

RETAIL/COMMERCIAL/OFFICE

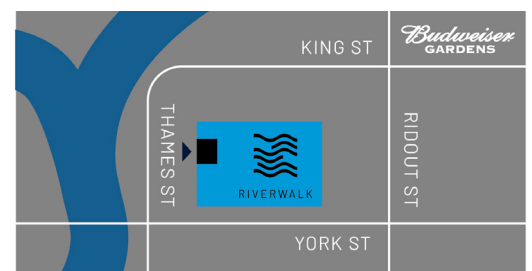
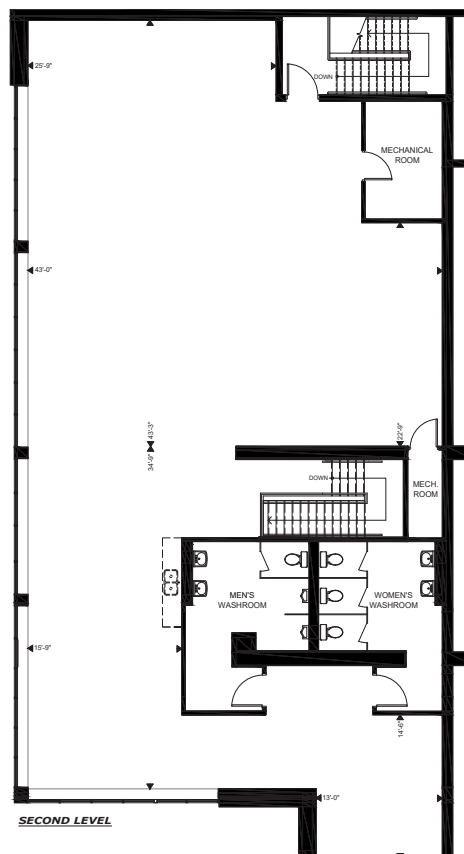
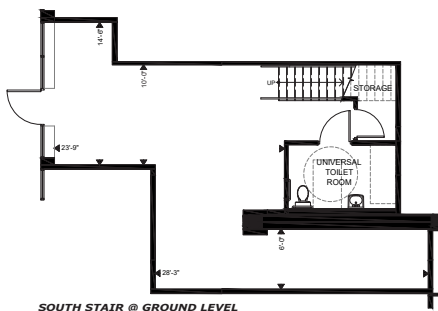
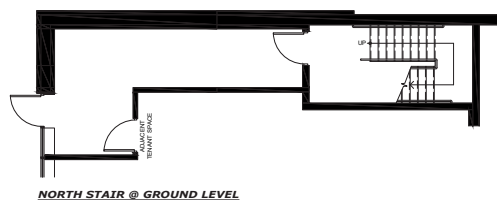
320 THAMES ST - UNIT 102

4,300 SQ.FT.

- ▶ Prime core downtown location
- ▶ Thames St. frontage, across from the Forks of the Thames River and Ivey Park
- ▶ Base of high-end Riverwalk development
- ▶ Competitive lease rates
- ▶ Adjacent to existing retail and office
- ▶ Base building condition, ready for Tenant build-out
- ▶ Turnkey build-out solutions available



\$32.00 gross / sq. ft. per annum



TRICAR

519-652-8900 x 110

retail@tricar.com
tricar.com/commercial