

# EDGEWATER

# 2N

2 Bedrooms

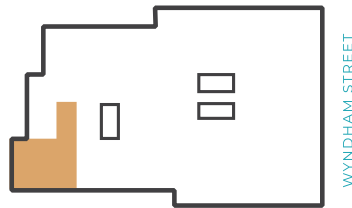
Accessible

Suite: 1420 sqft.

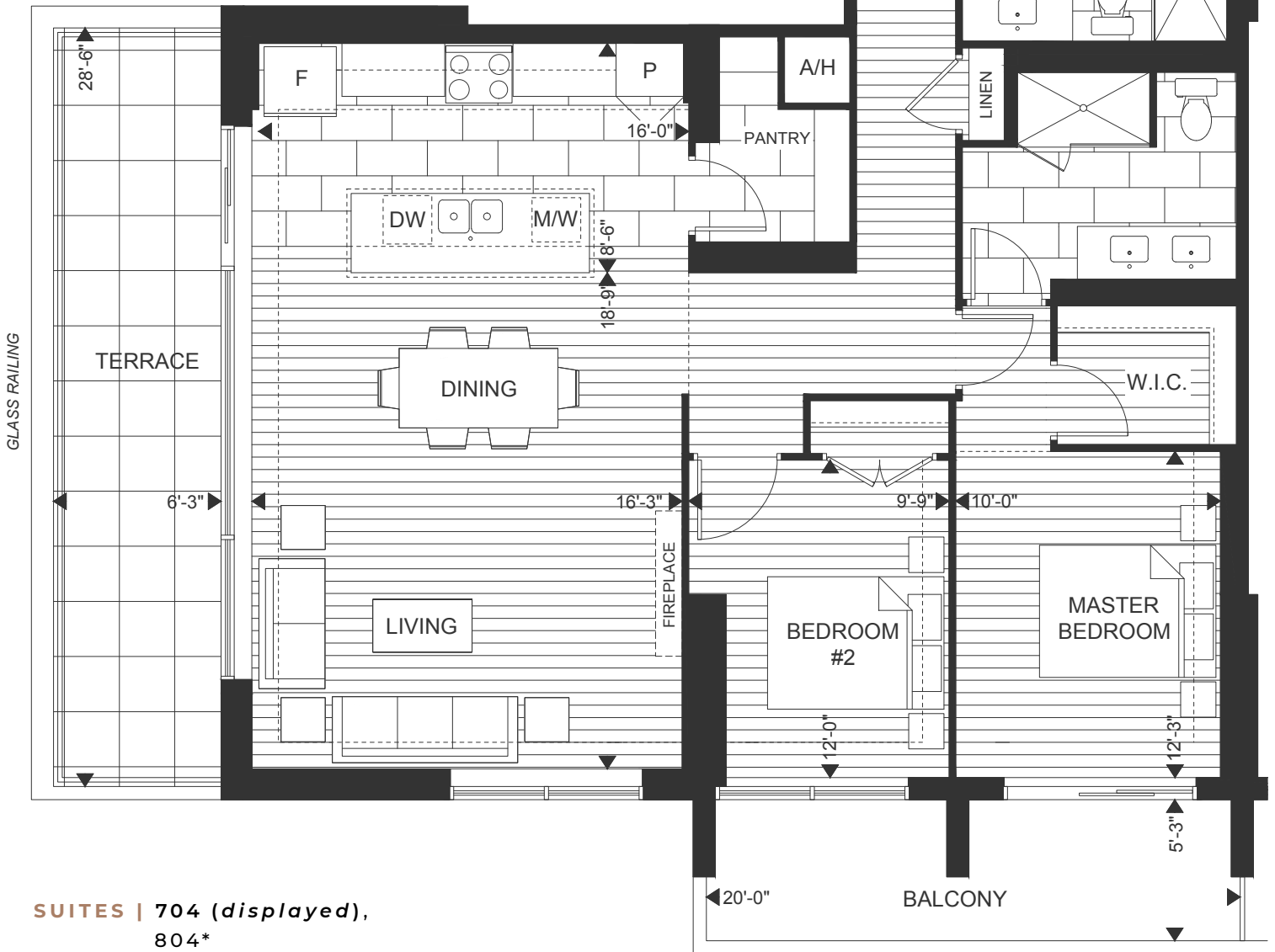
Terrace: 180 sqft.

Balcony: 100 sqft.

Total: 1700 sqft.



WYNDHAM STREET



**SUITES | 704 (displayed), 804\***

\*Balcony/terrace configuration and/or railing type differs from what is shown, see sales representative for details.

Plans and specifications are subject to change without notice. Actual usable floor space may vary from stated floor area. Illustrations are artists concept only and may show optional features not included in base price. See sales representative for further information.

E. & O. E.

PRECAST WALL