

SIGNATURE SUITE

SS-N

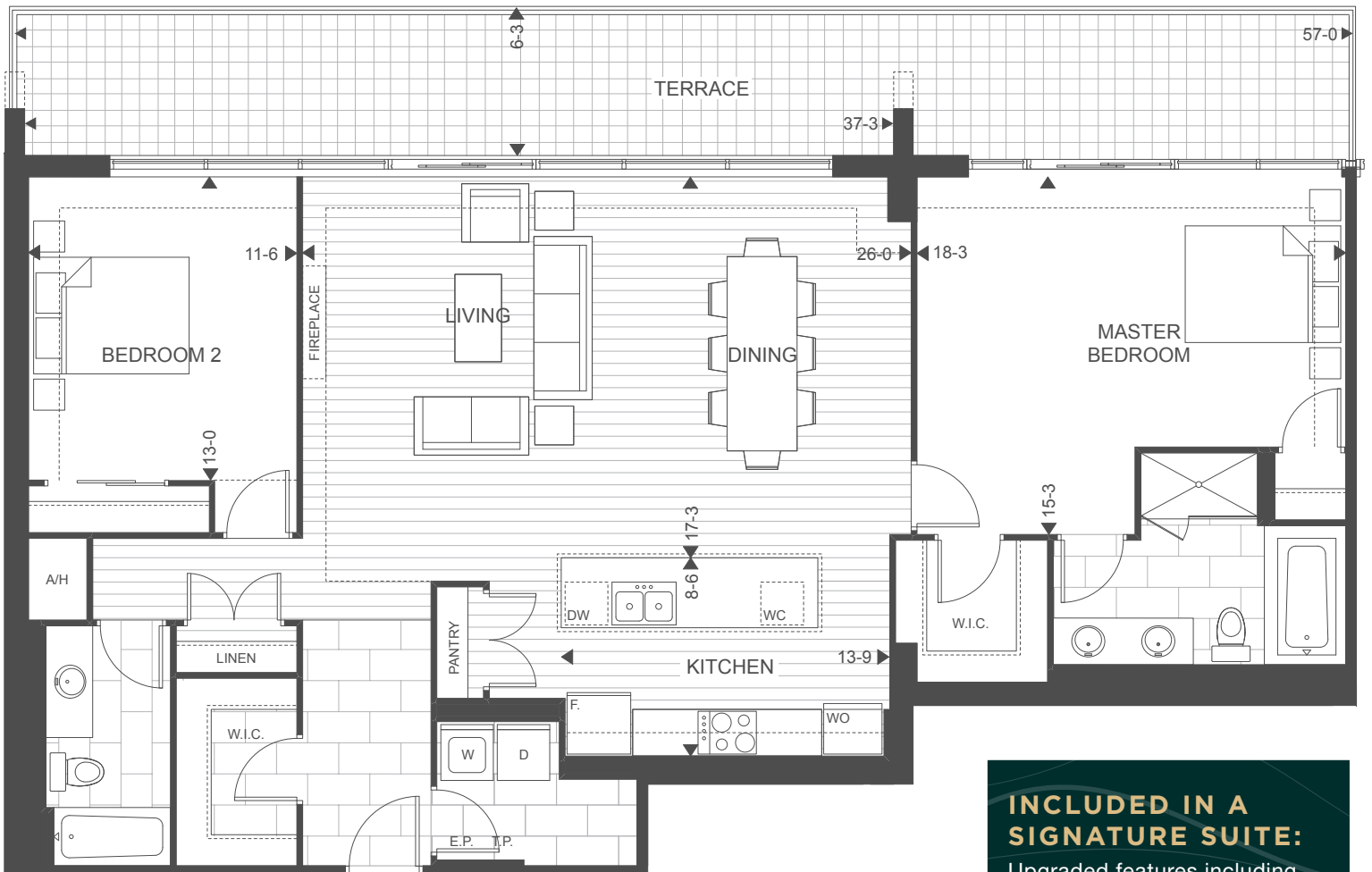
2 BED
SUITE: 1570 SQUARE FEET

TERRACE: 360 SQUARE FEET

TOTAL: 1930 SQUARE FEET



NORHLINK



INCLUDED IN A SIGNATURE SUITE:
 Upgraded features including cabinetry, countertops, built-in appliances, heated bathroom floors and more!

THE SKY COLLECTION



10TH FLOOR



Plans and specifications are subject to change without notice. Actual usable floor space may vary from stated floor area. Illustrations are artists concept only and may show optional features not included in base price. See sales representative for further information. E. & O. E.





NORTHLINK

EXPERIENCE THE HEIGHT OF LIVING IN A SIGNATURE SUITE

The Signature Suites at NorthLink are a collection of our more spacious suites and include upgraded finishes to further enjoy elevated luxury in your new home. Fantastic views and open-air living space expands your enjoyment to the outdoors.

ALL THE SUITES FEATURED IN THIS PACKAGE OFFER:

- Granite and Quartz selected from Category 2 options
- Upgraded Kitchen Aid built-in appliances including a wine cooler
- Additional cabinet stain and paint choices
- Wood dovetail and soft close drawers and doors - kitchen and bath
- Cabinet hardware selected from Category 2 options
- Crown moulding around upper cabinet (Shaker Style)
- Woodgrain melamine interior finish
- Backsplash, wall tile, floor tile and hardwood selected from Category 2 options
- 7" Engineered hardwood included in Living room, Dining room, Den and Bedrooms
- Heated floors in all Bathrooms
- Sinks, toilets, vanity faucets, kitchen faucet, and shower head selected from Category 2 options
- Jetted bathtub in Ensuite (if applicable as per plan)
- Architectural stone or tile around fireplace, floor to ceiling
- Crown moulding in Living room, Dining room, Den and Bedrooms
- Pot lights in Living room, Dining room, Den and Bedrooms
- Choice of 3 paint colours
- Black out blinds included in all Bedrooms

DECEMBER 2019